

PC1
LP1

PC8
PCCZ

PCX

PCET
PC-FLUSH
LPET
BPET

PCTK-VZ

PCTK-SZ

PC1-5

PC1C-X

PC1-5VZ

PC1-5SZ

PCET-TR-VZ

PCCZ-VZ

PCCZ-SZ

PCET-10-VZ

PCET-10-SZ

PCET-5VH

PCET-5SZ

PCET-5HG

LP1-5SZ

LPET-5SZ

PCET-VZ

PCET-SZ

PCX-VZ

PCX-SZ

PCET-4

PCET-RD

PCET-RDSM

PCET-6TX

PCET-6T

M62B

M62BSM

M62AMY

PCX-2VZ

PCX-2SZ

PCX-3SP

PCX-3P

PCET-5HGZ

PCET-B

PC-STLR

PCET-G

PCET-A

PC9X

PC6B

PC8

PC8X

PCTA-1

PC11-VZ

PC11-SZ

PC-B1

PC-TR

SIDE VIEW

SIDE VIEW

PC-TR SIDE VIEW

PCER

PC-HUGGIE

S-SOD

-S -OG -OS

-28 -28 -30S -30VZ -30SZ -2

-2VZ -2SZ -LP-SZ

PCTA-2

R-CL

IT'S A RING!

PC-FTP

PC-48

PC-48-2

PC-CROSS

-SV -SV

-VZ -SZ

-VZ -SZ

-VZ -SZ

-V

-S

PC48

PC-LADDER

PC-LADDER-2

PC-SOD-P

-V

-S

-VZ

-SZ

-VZ

-SZ

-1A

-1B

-2A

-2B

-3A

-4A

Pride Collection 3 – Side 1

rev.10/06 Prices subject to change without notice.

[Key] "P" Stones – Ruby, Mandarin Garnet, Yellow Sapphire, Emerald, Blue Sapphire, Amethyst (e.g. PC1-5)
 "SP" Stones – Garnet, Madeira Citrine, Peridot, Topaz, Amethyst (e.g. PCET-HG)
 "Z" Stones – Crystal / Cubic Zirconia, (simulated "P" Stones) (e.g. PCET-55Z)
 "G" – 14k Gold; specify yellow, white or rose gold. Dollar amount in parenthesis (\$_) is per size +/- adjustment from size 8
 "SS" Sterling Silver
 "V" Vermeil (= gold overlay). No it is not solid gold and yes it will eventually wear down.
 "V" items can be resurfaced at any time for \$5 or traded in for half credit toward a "G" version.

NOTE: for -VZ and -SZ styles, whole sizes only unless otherwise noted. Other styles available in quarter sizes

| | | |
|--|---|---|
| PCTK -VZ: Z stones in V (sizes 7-12) (\$45) | PCET-RDSM -SZ: Z stones in S (\$95) | -GZ: Z stones in G (\$110) |
| -SZ: Z stones in SS (sizes 7-12) (\$45) | -SP: P stones in S (\$145) | -G: P stones in G (\$195) |
| -S: SP stones in SS (\$95) | -GZ: Z stones in S (\$195) | -V:SP stones in V (\$40) |
| -GZ: Z stones in G (\$295) | -GP: P stones in G (\$225) | -S: SP stones in S (\$40) |
| -G: SP stones in G (\$295) | PCET-6TX -SZ: Z stones in S (\$95) | -VZ: Z stones in V (\$40) |
| -GP: P stones in G (\$495) | -SP: P stones in S (\$225) | -SZ: Z stones in S (\$40) |
| PC1-5 -VZ: Z stones in V/SS two-tone (sizes 9-14) (\$45) | -GZ: Z stones in G (\$245) | -GZ: Z stones in G (\$125) |
| -SZ: Z stones in SS (sizes 9-14) (\$45) | -GP: P stones in G (\$335) | -GP: P stones in G (\$295) |
| -S: SP stones in SS (\$125) | PCET-6T -SZ: Z stones in S (\$90) | -SZ: Z stones in S (\$20) |
| -GZ: Z stones in G (two tone optional) (\$450) | -SP: P stones in S (\$115) | -VZ:Z stones in V (\$20) |
| -G: SP Stones in G (two tone optional) (\$450) | -GZ: Z stones in G (\$195) | -GZ: Z stones in G (\$85) |
| -GP: P stones in G (two tone optional) (\$925) | -GP: P stones in G (\$245) | -GP: P stones in G (\$160) |
| PC1C-X -SZ: Z stones in SS (all sizes) (\$125) | M62B -SZ: Z stones in S (\$95) | PC-Huggie -2VZ: Z stones in V (\$20) |
| -GZ: Z stones in G (two tone optional) (\$350) | -SP: P stones in S (\$155) | -2SZ: Z stones in S (\$20) |
| -GP: P stones and diamond triangles in G (two tone optional) (\$995) | -GZ:Z stones in G (\$265) | -2GZ: Z stones in G (\$95) |
| See PCII Brochure (items PC1A-C) for other versions without top and bottom ridges. | -GP: P stones in G (\$345) | -2GP: P stones in G (\$175) |
| PCET-TR -VZ: Z stones in V (sizes 5-12) (\$45) | M62B-SM -SZ: Z stones in S (\$95) | -LP-SZ: Z stones in S (\$20) |
| -SZ: Z stones in SS (sizes 5-12) (\$45) | -SP: P stones in S (\$115) | -LP-GZ: Z stones in G (\$75) |
| -GZ: Z stones in G (\$275) | -GZ: Z stones in G (\$195) | (not shown) -BP -SZ: Z stones in S (\$20) |
| PCCZ -VZ: Z stones in V (sizes 5-12) (\$60) | -GP: P stones in G (\$225) | (bear) -VZ: Z stones in V (\$20) |
| -SZ: Z stones in SS (sizes 5-12) (\$60) | -GZ: purple Z stones in S (\$230) | S-SOD -S: no stone in S (\$5) |
| -G/GP/CZ: (inquire) | -G: amethyst in G (\$280) | -OS: onyx/other inlay in S (\$30) |
| PCET-10 -VZ: Z stones in V edge/SS center (sizes 7-12) (\$45) | PCET-B -GZ: Z stones in heavy G (\$295) | -G: no stone in G (\$15) |
| -SZ: Z stones in SS edge/V center (sizes 7-12) (\$45) | -GP: P stones in heavy G (\$495) | -OG: onyx/other inlay in G (\$40) |
| PCET-5 -VZ: Z stones in V (sizes 5-14) (\$45) | PCET-G -S: SP stones in heavy S (\$165) | PENDANTS/CHARMS |
| -SZ: Z stones in SS (sizes 5-14) (\$45) | -G: SP stones in heavy G (\$280) | PC-FTP -SZ: Z stones in S with SS chain (\$45) |
| -G: SP stones in G (\$275) | -SZ: Z stones in S (\$95) | -VZ: Z stones in V with V chain (\$45) |
| -GZ: Z stones in G (\$275) | -GZ: Z stones in G (\$225) | PC-48 -SZ: Z stones in S (\$40) |
| PCET-SH -SZ: Z stones in heavy S (\$95) | -GP: P stones in G (\$295) | -VZ: Z stones in V (\$40) |
| -S: SP stones in heavy S (\$125) | -SZ: Z stones in S (\$125) | -S: SP stones in S (\$40) |
| -G: SP stones in heavy G (\$450) | -S: SP stones in S (\$165) | -G: SP stones in G (\$125) |
| -GZ: Z stones in heavy G (\$450) | -GZ: Z stones in G (\$445) | -GZ: Z stones in G (\$125) |
| -P: P stones in heavy G (\$995) | -G: SP stones in G (\$525) | -GP: P stones in G (\$325) |
| LP1-5 -SZ: Z stones in SS (sizes 7-14) (\$45) | -GP: P stones in G (\$1300) | PC-48-2 -SZ: Z stones in S (\$20) |
| (leather pride) -GZ: Z stones in G (\$350) | PC6B -SZ: Z stones in S (\$95) | -VZ: Z stones in V (\$20) |
| -G: natural stones in G (inquire) | -S: SP stones in S (\$125) | -GZ: Z stones in G (\$95) |
| LPET-5 -SZ: Z stones in SS (size 7-14, 9.5,10.5,11.5) (\$45) | -GZ: Z stones in G (\$295) | -GP: P stones in G (\$125) |
| -GZ: Z stones in G (\$270) | -G: SP stones in G (\$345) | -S: SP stones in S (\$45) |
| -HGZ: Z stones in heavy G (\$450) | -GP: P stones in G (\$495) | -V: SP stones in V (\$45) |
| -G: natural stones in G (inquire) | PC8 -SZ: Z stones in S (\$95) | -GZ: Z stones in G (\$245) |
| PCET -VZ: Z stones in V (sizes 4-12) (\$45) | -S: SP stones in S (\$125) | -G: SP stones in G (\$295) |
| -SZ: Z stones in S (sizes 4-12) (\$45) | -GZ: Z stones in G (\$285) | -GP: P stones in G (\$595) |
| -G: SP stones in G (\$145) | -G: SP stones in G (\$285) | PC-LADDER -SZ: Z stones in S (\$40) |
| -GZ: Z stones in G (\$195) | -GP: P stones in G (\$1300) | -VZ: Z stones in V (\$40) |
| -GP: P stones in G (\$395) | -SZ: Z stones in S (\$125) | -GZ: Z stones in G (\$125) |
| PCX -VZ: Z stones in V (sizes 4-12) (\$45) | -S: SP stones in S (\$160) | -GP: P stones in G (inquire) |
| -SZ: Z stones in S (sizes 4-12) (\$45) | -GZ: Z stones in G (\$565) | PC-LADDER-2 -SZ: Z stones in S (\$20) |
| -GZ: Z stones in G (\$245) | -G: SP stones in G (\$565) | -VZ: Z stones in V (\$20) |
| -GP: P stones in G (\$345) | -GP: P stones in G (\$1300) | -GZ: Z stones in G (\$85) |
| PCX-3 SP: SP stones in S (\$140) | PCTA-1 Enamel Rainbow on S (sizes 4-12) (\$20) | -GP: P stones in G (inquire) |
| G: SP stones in G (\$295) | PCTA-2 Enamel Rainbow on S (sizes 5-12) (\$20) | PC-SOD-P -1A: Z stones in V with enamel (\$50) |
| GZ: Z stones in G (\$295) | PC-TR -SZ: Z Stones in S (sizes 3-10) (\$45) | -1B: P stones (with onyx) in G (\$395) |
| GP: P stones in G (\$495) | (finger or -VZ:Z Stones in V (sizes 3-10) (\$45) | -2A: Z stones in V (\$45) |
| PCX-2 VZ: Z stones in V (sizes 3-10) (\$45) | toe ring!) -GP Stones in Z (all sizes) (\$195) | -2B: P stones in G (\$225) |
| SZ: Z stones in S (sizes 3-10) (\$45) | GP -P Stones in G (all sizes) (\$225) | -3A: Z stones in V (\$75) |
| GZ: Z stones in G (\$195) | R-CL link ring with rainbow (sizes 7-12) (\$5) | -3B: P stones in G (slightly smaller than 3-A) (\$495) |
| GP: P stones in G (\$495) | R-CL -LP (not shown): link ring with leather pride colors (sizes 7-12) (\$5) | -4A: Z stones in V (\$95) |
| PCET-4 SZ: Z stones in S (\$140) | BRACELETS | -4B: P stones and diamonds in G (slightly smaller than 4-A) (\$675) |
| -GZ: Z stones in G (\$295) | PC11 -SZ: Z stones in 7" S (105) in 8" (\$135) | |
| -GP: P stones in G (\$525) | -VZ: Z stones in 7" V (\$105) in 8" (\$135) | |
| PCET-RD -SZ: Z stones in S (\$95) | PC-B1 -SZ: Z stones in 7" S (\$85) | |
| -GZ: Z stones in G (\$231) | -VZ: Z stones in 7" V (\$85) | |
| -GP: P stones in G (\$325) | EARRINGS (all prices are EACH not pair) | |
| | PCER-28 SZ: Z stones in S (\$85) | |

PRIDE COLLECTION 3 - SIDE 2

JBP (800) 969-7464 jewelrybyponce.com



PC2M-25-2



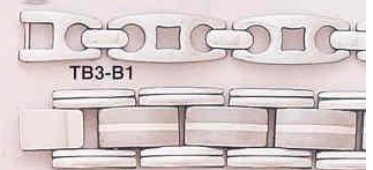
PC2M-25



TB15-BD



PC-DNT-6VZ



TB3-B1

TB3-B2



SIDE VIEW
PC2M-25-2



SIDE VIEW
PC2M-25

NEW



TB3-1



TB3-4



TB3-7

TITANIUM



TB3-5



TB3-8



TB3-16



HUG18 HUG19 HUG20



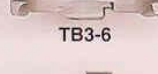
PC1C-SZ



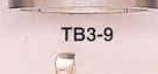
SIDE VIEW
PC1C-SZ



TB3-2



TB3-6



TB3-9



TB3-11



HUG21 HUG22

CLOSE OUTS



HRB



PC38-P



P-GROWL-SM



P-GROWL-3D



P-GROWL-LG



FLEX
TEDDY
-LG



-SM



P-PENIS



S-WOLF



HUG-GZ



HUG15



HUG16



HUG17



MUSCLE
BEAR



R-GROWL



R-GROWL-3D



S-WOLF



S-LION



S-PIG



THE ERECTION



C-22
SIDE



C-23
SIDE



C-19



S-AR



S-P12



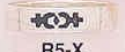
S-RB



RSQ-VZ



SIDE VIEW
RSQ-VZ



R5-X



H5
HOOP



C4
CUFF



PC47-AR



PC FLUSH



SIDE VIEW
PC FLUSH



C6 CUFF



P6-XLA



BPET-5SZ



BP1-5SE



BP1-5VE



BP1-5
SIDE
VIEW



P20G



P19G



P19S



S27S



S28



S27G

TOE RINGS



TR1



TR
SIDE
VIEW



TR2



TR4



TR3



TR5

STEEL BRACELETS

SBB-1

SBB-2

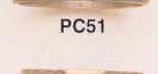
SBB-3



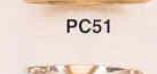
R17



R16



PC51



PC51



RSQ-SZ



PCFLUSH-C



PC51



PC51-4



RSQ-VZ



PCFLUSH-D



PCFLUSH-E



PC51-4



PC51



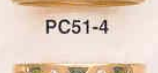
PC51-4



PC51-4



ECW-8A



ECW-8B

CH-3

CH-4

CH-2

CH-1S

CH-1G

Pride Collection 3 - Side 2

rev10-06 NOTE: Prices subject to change without notice.

| | | |
|----------|---|---------|
| PC2M25 | -SZ: Z Stones in SS (sizes 7-12) | (\$45) |
| | -VZ: Z Stones in V (sizes 7-12) | (\$45) |
| | -GZ: Z Stones in G | (\$350) |
| | -GP: P Stones in G | (\$525) |
| PC2M25-2 | -SZ: Z Stones in SS (sizes 5-10) | (\$45) |
| | -VZ: Z Stones in V (sizes 5-10) | (\$45) |
| | -GZ: Z Stones in G | (\$295) |
| | -GP: P Stones in G | (\$45) |
| PC1-C | -SZ: Z stones in SS w/ V overlay (sizes 6-12) | (\$45) |
| | -GZ: Z stones in G (white/yellow 2-tone) | (\$350) |
| LPET | -SZ: Z stones in SS (sizes 5-12) | (\$45) |
| | -GZ: Z stones in G | (\$245) |
| BPET 5 | -SZ: Z Stones in S (sizes 7-14) | (\$45) |
| | -VZ: Z Stones in V (sizes 7-14) | (\$45) |
| | -GZ: Z Stones in G | (\$245) |
| BP1 5-SE | enamel/epoxy in S (sizes 7-14) | (\$35) |
| | -VE: enamel/epoxy in V (sizes 7-14) | (\$35) |

Ask about this ring style with Z stones!

| | | |
|-------------|--|--------------------|
| R-GROWL: | all sizes in S (\$95) | in G (inquire) |
| R-GROWL-3D: | all sizes in S (\$95) | in G (inquire) |
| PCFLUSH | -RI: dark pink Z in S (\$20) | in G (\$245) |
| | -PI: light pink Z in S (\$20) | in G (\$245) |
| | -O: black Z in S (\$20) | in G (\$245) |
| | -A: purple Z in S (\$20) | in G (\$245) |
| | -C: natural stone (amethyst or pink tourmaline, call for many others) in S from (\$95) | in G from (\$295) |
| | -D: 5mm band inlaid with onyx, lapis, sugilite, other mineral stone in S from-(\$95) | in G from- (\$295) |
| | -E: 4mm band inlaid with onyx, lapis, sugilite, other mineral stone in S-(\$95) | in G (\$225) |
| R16 & R17: | onyx stone inlay in S (whole sizes 5-12) | (\$20) |
| RSQ | -SZ: white Z stone "SPECIAL PRICE" in S | (\$20) |
| | -VZ: white Z stone "SPECIAL PRICE" in V | (\$20) |

PC51 & PC51-4 & PC52: all made to your specifications to the quarter size

Please select ONE of Each of the following:

- BAND METAL: S or 14k G (white or yellow)
- BAND FINISH: polished (P) or brushed (B)
- TRIANGLE COLOR: yellow, white or rose 14k G
- TRIANGLE FINISH: P or B

NOTE: More of the many possible combinations are illustrated in our Band Collection (W4 Series) and on our internet site in Pride Collection 2, Supplement 1 and 2 (as PC51/PC51-4).

| STYLE NUMBER | S BAND / G TRIANGLE | G BAND / G TRIANGLE |
|-------------------|---------------------|------------------------|
| PC51 (5.5mm wide) | (\$65) | up to size 12: (\$225) |
| | | over size 12: (\$245) |

| | |
|---|---|
| PC51 Special (shiny 6mm band w/ yellow G triangle \$40) | |
| PC51-4 (4mm wide) | (\$50) in G (\$175) |
| PC51-4 Special : (shiny 4mm band w/ yellow G triangle \$30) | |
| PC52 (5mm wide "pipe" band) | (\$65) (\$245) |
| R8 | -RI: dark pink Z in S (\$20) in G (\$195) |
| | -PI: light pink Z in S (\$20) in G (\$195) |
| | -O: black Z in S (\$20) in G (\$195) |
| | -A: purple Z in S (\$20) in G (\$195) |
| | -NS: natural stone (amethyst or pink tourmaline; call for many others) in S (\$75) in G (\$225) |

| | |
|-----------------------|--------------|
| ECW-8: colored stones | in G (\$225) |
| all diamonds | in G (\$275) |

Shown: Blue sapphire (-8D)Amethyst (-8C)Ruby or pink sapphire (-8A) Emerald or tsavorite garnet (-8B)Inquire about other colors, inlay (onyx, lapis, sugilite)and wider versions with same size stones (-8X) or larger stones (-82X).

TOE RING TRI-5 S (\$12)

PENDANTS (bear items also available as pins)

| | |
|-----------------------------|--|
| P20 | -RI: dark pink Z in S (\$12); in G (\$39) |
| | -PI: light pink Z in S (\$12); in G (\$39) |
| | -O: black Z in S (\$12); in G (\$39) |
| | -A: purple Z in S (\$12); in G (\$39) |
| | -NS: natural or inlay stones (inquire) |
| P19 | -RI: dark pink Z in S (\$15); in G (\$59) |
| | -PI: light pink Z in S (\$15); in G (\$59) |
| | -O: black Z in S (\$15); in G (\$59) |
| | -A: purple Z in S (\$15); in G (\$59) |
| | -NS: natural or inlay stones (inquire) |
| FLEX TEDDY -LG: | in S (\$30) in G (\$425) |
| -SM: | in S (\$30) in G (\$225) |
| P-PENIS: regular weight | in S (\$29) in G (\$175) |
| Heavy weight | in S (\$49) in G (\$205) |
| P-GROWL-SM: pendant or pin | in S (\$20) in G (\$85) |
| P-GROWL-3D: pendant or pin | in S (\$40) in G (\$295) |
| P-GROWL-LG: pendant or pin | in S (\$35) in G (\$245) |
| MUSCLE BEAR: pendant or pin | in S (\$45) |

Pendant/pin combination in base metal (\$20)

THE ERECTION: flexible shaft becomes erect when chain is pulled! SS (\$30) Available in White or Yellow Gold (Chain sold separately) (\$525)

PC-DNT-6VZ or -6SZ: As a set of six "donuts", each consisting of all stones of one color (one donut all red, etc.) \$75/set of 6. Call for GZ pricing.-chain extra

HUGGIE EARRINGS - We have many more styles not shown.

Available in sterling (SZ) or overlay (VZ) stones are cubic zirconia stones.
 HUG18 SZ or VZ: \$20 ea. or 2 for \$35 (square stones)
 HUG19 SZ or VZ: \$20 ea. or 2 for \$35 (bars with round stones)
 HUG20 SZ or VZ: \$20 ea. or 2 for \$35 (bagettes)
 HUG21 SZ or VZ: \$20 ea. or 2 for \$35 (no stones)
 HUG22 SZ or VZ: \$20 ea. or 2 for \$35 (no stones—1/4" wide!)

STUD EARRINGS (sold EACH-price is for one earring, not pair)

| | |
|---------|---|
| S-WOLF | -walking: in S (\$10) in G (\$30) |
| | -head: in S (\$10) in G (\$30) |
| S-LION: | in S (\$5) in G (\$20) |
| S-PIG: | in S (\$5) in G (\$20) |
| S-RB: | in S (\$5) or G overlay (\$10) |
| S-P12: | in S (\$10) |
| S-AR: | in gold overlay with enamel (\$5) |
| S27 | -RI: dark pink Z in S (\$10) in G (\$35) |
| | -PI: light pink Z in S (\$10) in G (\$35) |
| | -O: black Z in S (\$10) in G (\$35) |
| | -A: purple Z in S (\$10) in G (\$35) |
| | -NS: natural or inlay stones (inquire) |
| S28 | -RI: dark pink Z in S (\$8) in G (\$30) |
| | -PI: light pink Z in S (\$8) in G (\$30) |
| | -O: black Z in S (\$8) in G (\$30) |
| | -A: purple Z in S (\$8) in G (\$30) |
| | -NS: natural or inlay stones (inquire) |

EAR CUFFS

| | |
|-------------------|-------------------------|
| C-19: plain | in S (\$5) in G (\$30) |
| C-22: naked woman | in S (\$10) in G (\$60) |
| C-23: dolphin | in S (\$10) in G (\$45) |

CHAINS

We carry more than 100 link styles and thicknesses in bracelet, anklet, and necklace lengths (request chart). Prices below are for 18".

| | |
|-----------------------|-------------------------|
| CH-1: box link | in S (\$10) in G (\$69) |
| CH-2: ball link | in S (\$10) in G (\$79) |
| CH-3: rope link | in S (\$10) in G (\$89) |
| CH-4: snake/coil link | in S (\$10) in G (\$99) |

CLOSE OUTS - Limited to sizes/quantities on hand

HRB - Annodized earring for \$5 each
 Huggie style earrings in solid 14K white or yellowgold with CZs:
 HUG 1 GZ \$20 each
 HUG 2 GZ \$35 each
 HUG 3 GZ \$50 each
 HUG 15 GZ-with single row of CZ's \$15
 HUG 16 GZ-with single row of CZ's \$25 or double row \$35 or triple row \$50
 HUG 17 GZ-with single row of CZ's \$30 or double row \$40 triple row \$55
 RSQ-VZ (gold overlay) or SZ (sterling) with cubic zirconia triangle and satin finish sizes 4 to 14 (\$10.)
 R5-X sterling with oxidized recessed symbol \$10
 PC47-AR-VZ (gold over lay) or SZ (silver) with CZ's: \$15 each
 H5 HOOP sterling endless hoop \$5 each
 C4 CUFF for non pierced ears (sterling) \$5 each
 C6 CUFF for upper ear—available in black, purple or pink—sterling \$10/ea or solid gold \$20/ea
 PC FLUSH (sterling)—available in 4 colors (black, purple, light or dark pink) for \$15/ea (sizes 4-12)
 P6-XLA (sterling) \$20/ea

TITANIUM RINGS from \$50.
 TITANIUM BRACELETS from \$95
 TUNGSTEN RINGS from \$200.
 STEEL BRACELETS from \$45.
 STEEL CHAINS from \$45
 STEEL HUGGIES/HOOPS from \$10.
 STEEL RINGS from \$10

JBP (Jewelry By Ponce)

Mailing Address: 668 N. Coast Highway, # 331 Laguna Beach, CA 92651

E-Mail: jewelry@jewelrybyponce.com
 WEB: www.jewelrybyponce.com
 Information: (949) 497-4154
 Orders: (800) 969-RING
 Fax: (949) 494-3837

Pride Collection 3
Supplement 1

JBP Jewelry by Ponce (949) 497-4154 • (800) 969-Ring



Pride Collection 3 – Supplement 1

revised 10/06 NOTE: Prices subject to change without notice.

- [KEY]: "P" Stones – Ruby, Mandarin Garnet, Yellow Sapphire, Emerald, Blue Sapphire, Amethyst.
 "SP" Stones - Garnet, Madeira Citrine, Golden Citrine, Peridot, Topaz, Amethyst.
 "Z" Stones - Crystal/Cubic Zirconia (simulated "P" stones)
 "G" 14k Gold; specify yellow, white or rose gold.
 "S" Sterling Silver
 "V" Vermeil (= gold overlay). V items can be re-surfaced for \$5, or traded in for ½ credit toward a G item.
 "T" Inlay stone – Onyx, Lapis, Malachite, Hematite, Sugillite, Pink Rhodrite, Turquoise, etc.

RINGS

| | |
|---|-----------|
| PC-2W-36 -SZ: Z stones in S (sizes 5-12) | (\$45) |
| -VZ: Z stones in V (sizes 5-12) | (\$45) |
| -GZ: Z stones in G | (\$275) |
| -GP: P stones in G | (inquire) |
| PCET-RD-3 -G: Rainbow in all natural SAPPHIRES set in G. | (\$595) |
| P stones not shown | (\$345.) |
| PCET-6 -SZ: Z stones in heavy S | (\$175) |
| -S: SP stones in S | (\$195) |
| -G: SP stones in G | (\$495) |
| -GZ: Z stones in G | (\$495) |
| -GP: P stones in G | (\$1200) |
| PC3A -SZ: Z stones in S | (\$125) |
| -GZ: Z stones in G | (\$295) |
| -GP: P stones in G | (\$495) |
| PC2A -SZ: Z stones in S | (\$95) |
| -GZ: Z stones in G | (\$295) |
| -GP: P stones in G | (\$495) |
| PC3B -SZ: Z stones in S | (\$95) |
| -GZ: Z stones in G | (\$275) |
| -GP: P stones in G | (\$425) |
| PC2B -SZ: Z stones in S | (\$95) |
| -GZ: Z stones in G | (\$275) |
| -GP: P stones in G | (\$425) |
| PCET-TR-SZ: Z stones in S (sizes 5-12) | (\$45) |
| -VZ: Z stones in V (sizes 5-12) | (\$45) |
| -GZ: Z stones in G | (\$275) |
| PC1C 14k gold (white center two-tone optional) with P stones. | |
| "D" trillion cut diamond side stones | (\$895) |
| "L" man-made diamond side stones | (\$595) |
| "O" onyx triangle side stones | (\$595) |
| Note: For Z stones instead of P, subtract \$180. | |
| PC1CZ V edges and S center (reverse of what is shown), set with Z stones (sizes 7-12) | (\$45) |
| PC1A Same as PC1C above (14k gold with P stones) But no side stones. | (\$540) |
| With Z instead of P. | (\$390) |
| PC1 -VZ Z stones in V (sizes 7-12) | (\$45) |
| -GZ Z stones in G | (\$295) |
| -GP P stones in G | (\$475) |
| -SZ Z stones in S (sizes 7-12) | (\$45) |
| PC-83-1078 Rainbow of all natural SAPPHIRES in G | (\$1100) |
| PC33 6mm G pipe band with any SP or I triangle, including pink tourmaline and onyx. | (\$225) |
| With any Z triangle, including pink ice. | (\$195) |
| Also available with any other stones (i.e. Emerald, Tanzanite, etc.). Please inquire for pricing. | |
| PC35 5mm G pipe band with any SP or I triangle, including pink tourmaline and onyx. | (\$195) |
| With any Z triangle, including pink ice. | (\$175) |
| Also available with any other stones (i.e. Emerald, Tanzanite, etc.). Please inquire for pricing. | |
| PC36 4mm G pipe band with any SP or I triangle, including pink tourmaline and onyx. | (\$95) |
| With any Z triangle, including pink ice. | (\$120) |
| Also available with any other stones (i.e. Emerald, Tanzanite, etc.). Please inquire for pricing. | |
| PC-TR (for toes or fingers!) | |
| -SZ: Z stones in S (sizes 3-10) | (\$45) |
| -VZ: Z stones in V (sizes 3-10) | (\$45) |
| -GZ: Z stones in G | (\$195) |
| -GP: P stones in G | (\$225) |
| PC31/PC32 Any SP or I stones (including pink tourmaline and onyx) in G | (\$395) |
| in S | (\$125) |
| any Z stone in G | (\$295) |
| in S | (\$95) |
| any P stone (including tanzanite) in G | (inquire) |
| PC29 Any SP or I stones (including pink tourmaline) | |

| | |
|--|-----------------------------|
| in G | (\$195) |
| in S | (\$95) |
| any Z stone in G | (\$95) |
| in S | (\$45) |
| any P stone (including tanzanite) in G | (inquire) |
| R8X 7mm G pipe band with SP triangle in G | (\$225) |
| with SP triangle in S | (\$75) |
| with Z triangle in G | (\$225) |
| with Z triangle in S | (\$45) |
| R8 See PC33 above | |
| PC36A See PC 36 above | |
| PC-TR-G1 G toe-ring with enamel (one size) | (\$45) |
| PC10 I stones (any combination – shown with pink rhodnite/PC10A and sugilite/PC10C triangles, both with onyx stripes) in G | (\$375) |
| in S | (\$195) |
| BPET-5 (Bear Pride) | |
| -SZ: Z stones in S (sizes 7-14) | (\$45) |
| -VZ: Z stones in V (sizes 7-14) | (\$45) |
| -GZ: Z stones in G | (\$295) |
| BP1-5 (Bear Pride) | |
| -SZ: Z stones in S (sizes 7-15) | (\$45) |
| -VZ: Z stones in V (sizes 7-15) | (\$45) |
| -GZ: Z stones in G | (\$295) |
| PCTA-4 Enamel in S (sizes 4-10) | (\$20) |
| PCTA-3 Enamel in S (sizes 8-14) | (\$30) |
| PCTA-5 Enamel in S (sizes 5-12) | (\$20) |
| EARRINGS | |
| PC-HUGGIE-3 | |
| -SZ: Z stones in S | (\$25 each or two for \$45) |
| -VZ: Z stones in V | (\$25 each or two for \$45) |
| -GZ: Z stones in G | (\$95 each) |
| -GP: P stones in G | (\$225 each) |
| PCER-2 | |
| -SZ: Z stones in S | (\$15 each) |
| -VZ: Z stones in V | (\$15 each) |
| -GZ: Z stones in G | (\$75 each) |
| -GP: P stones in G | (\$125 each) |
| H53 Crystal beads on G wire | (\$15 each) |
| on S wire | (\$10 each) |
| H52 Smaller size (hoops and beads) not shown. | |
| PC16 -S12 triangles on 12mm S hoop | (\$6 each) |
| -V12 triangles on 12mm G hoop | (\$12 each) |
| -S14 triangles on 14mm S hoop | (\$6.50 each) |
| -V14 triangles on 14mm G hoop | (\$14 each) |
| -Triangle set only | (\$5 per set) |
| PC17 -S12 circles on 12mm S hoop | (\$6 each) |
| -V12 circles on 12mm G hoop | (\$12 each) |
| -S14 circles on 14mm S hoop | (\$6.50 each) |
| -V14 circles on 14mm G hoop | (\$14 each) |
| -Circle set only | (\$5 per set) |
| PENDANTS | |
| PC-P-AR -SZ: Z stones in S | (\$20) |
| -VZ: Z stones in V | (\$20) |
| -GZ: Z stones in G | (\$125) |
| -GP: P stones in G | (\$195) |
| PC-P-10X8 SP in G | (\$1265) |
| Bracelet (not shown) | (\$445) |
| PC47 -SZ: Z stones in S | (\$40) |
| -VZ: Z stones in V | (\$40) |
| -S: SP stones in S (not shown) | (\$120) |
| -GZ: Z stones in G | (\$150) |
| -GP: P stones in G | (inquire) |
| -G: SP stones in G (not shown) | (\$175) |
| PC48B Typo! Correct # is PC45B!! | |
| -SX: upgraded SP stones in S | (\$175) |
| -GX: upgraded SP stones in G | (\$225) |
| LP47-SZ Leather Pride Z stones in S | (\$60) |
| BP47-SZ Bear Pride Z stones in S | (\$60) |
| PC-P-Deco-Saph All natural SAPPHIRES in G | |
| -A: 3mm round | (\$345) |

| | |
|--|-----------|
| -B: 3.5mm round | (\$465) |
| -C: 4mm princess | (\$645) |
| PC-P-Deco-SZ: Z stones in S | (\$45) |
| -VZ: Z stones in V | (\$45) |
| -GZ: Z stones in G | (\$245) |
| BP-P1-5 Bear Pride, LP-P1-5 Leather Pride or PC-P1-5 Rainbow Pride | |
| -SZ: Z stones in S | (\$45) |
| -VZ: Z stones in V | (\$45) |
| -GZ: Z stones in G | (\$225) |
| -GP: P stones in G | (inquire) |
| -G: SP stones in G | (\$225) |
| -S: SP stones in S | (\$120) |
| PC45 4mm square SP stones | |
| -G: SP stones in G | (\$195) |
| -S: SP stones in S | (\$145) |
| PC46 5mm square SP stones | |
| -G: SP stones in G | (\$255) |
| -S: SP stones in S | (\$195) |
| BRACELETS/ANKLETS | |
| PCB1 -VZ: Z stones in V | (\$95) |
| -SZ: Z stones in S | (\$95) |
| -GZ: Z stones in G | (\$375) |
| This item comes 7.5 inches. Extension piece is available in S or V for \$15 each, or in G for \$35 each. | |
| PCBID-4 -VZ: Z stones in V 7" (\$95) / 8" (\$110) | |
| -SZ: Z stones in S 7" (\$95) / 8" (\$110) | |
| -GZ: Z stones in G 7" (\$640)* | |
| -G: SP stones in G 7" (\$680)* | |
| -GP: P stones in G 7" (\$1095)* | |
| *Extension piece for G add \$25 per ½ inch. | |
| PC-B-CURB -GZ: Z stones in G | (\$495) |
| -GP: P stones in G | (\$795) |
| PC-B-FIG -GZ: Z stones in G | (\$495) |
| -GP: P stones in G | (\$795) |
| PC-BID -VZ: Z stones in V 7" (\$70) / 8" (\$80) | |
| -SZ: Z stones in S 7" (\$70) / 8" (\$80) | |
| -GZ: Z stones in G | (\$675) |
| -GSP: SP stones in G | (\$695) |
| -GP: P stones in G | (\$795) |
| PC-B-CL | (\$10) |
| B4 Wooden beads on leather 8" cord | (\$15) |
| B5 Wooden beads on leather cord | |
| -B 8" bracelet | (\$10) |
| -N 20" necklace | (\$10) |
| MISCELLANEOUS | |
| PC-CFLK V with enamel | (\$65/pr) |
| PC39 Austrian crystal with 18k gold overlay; available as a pin, or can be special ordered as a cufflink, tux stud, button cover, etc. | (\$20ea.) |
| PC-DNT Available as a single "donut" with one stone of each of the six rainbow colors VZ or SZ (\$15each); OR as a set of six "donuts", each consisting of all stones of the same color (one donut all red, etc). (\$75 per set) | |

Findings Supplement 1

JBP Jewelry by Ponce (949) 497-4154 • (800) 969-Ring



Findings – Supplement 1

rev.10/06 NOTE Prices subject to change without notice.

- Key] "P" Stones – Ruby, Mandarin Garnet, Yellow Sapphire, Emerald, Blue Sapphire, Amethyst (e.g. PC1-5)
 "SP" Stones – Garnet, Madeira Citrine, Peridot, Topaz, Amethyst (e.g. PCET-HG)
 "Z" Stones – Crystal / Cubic Zirconia, (simulated "P" Stones) (e.g. PCET-55Z)
 "CZ" Cubic Zirconia (A hard crystal faceted like a gemstone)
 "G" – 14k Gold; specify yellow, white or rose gold. Dollar amount in parenthesis (\$) is per size +/- adjustment from size 8
 "S" Sterling Silver
 "V" Vermeil (= gold overlay). No, it is not solid gold and yes it will eventually wear down.
 "V" items can be resurfaced at any time for \$5 or traded in for half credit toward a "G" version.
 "L" Lannyte – Laboratory "created diamond" (a fraction of the cost, but an expert would have to use special testing equipment to determine it is not a natural diamond.)

S: POST/STUD EARRINGS (each, not pair)

- S1A-CZ in S (\$3); CZ in G (\$10); Dia. in G (\$39)
 S1B-CZ in S (\$6); CZ in G (\$15); Dia. in G (\$95)
 S1C-CZ in S (\$10); CZ in G (\$20); Dia. in G (\$125)
 S1D S ball (\$3); G ball (\$8)
 S1E S ball (\$2); G ball (\$6)
 S1F S ball (\$1); G ball (\$4)
 S1G S ball (\$4); G ball (\$12)
 S1H gray (oxidized S) ball (\$4)
 S1I gray (oxidized S) ball (\$6)
 S4-S (\$6); S4-G (\$15)
 S5-S (\$6); S5-Y (\$10); S5-R (rose gold) (\$12)
 S6-S (\$6); S6-G (\$20)
 S7-S (\$6); S7-G (\$15)
 S8-S (\$6); S8-G (\$15)
 S9-S (\$6); S9-G (\$15)
 S10-S (\$6); S10-G (\$25)
 S11 G handcuff (\$35)
 S12 G handcuff (\$40)
 S13 G handcuff (\$60) As pendant/charm in G (\$60)
 S14 S handcuff (\$8)
 S15 S handcuff (\$6)

H: HOOP EARRINGS (each, not pair)

- H1-S (\$3) H40-G (\$6)
 H2-S (\$2) H41-G (\$8)
 H3-S (\$2) H42-G (\$10)
 H4-S (\$4) H49 multi-colored niobium (\$4)
 H6-S (\$8) H50 multi-colored niobium (\$5)
 H7-S (\$9) H51 multi-colored niobium (\$6)
 H10-S (\$2) H60-S (\$4)
 H16-S (\$3) H69-S with black coil (\$10)
 H18S-S (\$2) H71 S (\$12);
 H28SS-S (\$10) H76L-S with hematite bead (\$8)
 H31-G (\$15) H79 S (\$3); White G (\$20)
 H32A-G (\$24) H80 S (\$10); White G (\$30)
 H33-G (\$28) H81 S (\$4); White G (\$25)
 H34-G (\$30) H82 S (\$5); White G (\$30)
 H39-G (\$16) H83 S (\$4); White G (\$10)
 H39L-G (\$18) H84S S (\$2); 84L S (\$3)
 H39XL-G (\$20) H85-G (\$18); H85 sm. (\$16)
 S47-S Safety Pin (unhooks and goes thru ear) (\$5)

P: PENDANTS/CHARMS/PINS

- P1-S (\$12); P1-G (\$60)
 P2-S (\$6); P2-G (\$20)
 P3-S (\$8); P3-G (\$30)
 P4-S (\$15); P4-G (\$35)
 P5-S (\$8); P5-G (\$29)
 P6-G (\$70); P6-S (\$20)
 P6XL-S (\$25); P6XL-G (inquire)
 P7-G (\$24); P7-S (\$8)
 P8-G (\$19); P8-S (\$6)
 P9-G (\$29); P9-S (\$6)
 P9sm-G (\$28); P9sm-S (\$5)
 P10-G (\$20); P10-S (\$6)
 P11-G (\$39); P11-S (\$10)
 P12-G (\$49); P12-S (\$12)
 *P14-G (\$59); P14-S (\$19)
 *P15-G (\$59); P15-S (\$19)
 *Add \$5 for 2 engraved initials
 P18-S (\$25); P18-G (inquire)
 P23-S with onyx and light pink crystal (\$18)
 P24-S 2-piece "embrace" (\$40)
 -specify 2-tone (shown) or shiny.
 P24-G 2-piece "embrace" (not shown) (\$240)
 -specify both white G, both yellow G or combo.
 P-Dyke-G (\$95); P-Dyke-S (\$20)
 - letters of word DYKE are one on top of another; also available: BEAR, HOMO, GAY and FEMME.
 P-Penis-G hollow back (\$149) or solid (\$199). Optional PA in G add (\$20).
 P-Penis-S solid (\$60); optional PA add (\$10).
 PC38D Austrian Crystal with G overlay, red or pink (\$45)

R: RINGS

- R1-S Three interlocking bands (\$18) (see Band Col. for G)
 R2-S (whole sizes 5-12) (\$16) (see Band Col. for G)
 R5-S (whole sizes 5-9) (\$20) Note: \$25 for other sizes.
 R5-G (all sizes) (\$95)
 R6-S (whole sizes 5-10) (\$25)
 R13-S 2 piece interlocking men (whole sizes 8-12) (\$40)
 R13-G 2 piece interlocking men (all sizes) (\$195)
 R14-S 2 piece interlocking women (whole sizes 5-9) (\$30)
 R14-G 2 piece interlocking women (all sizes) (\$145)
 *PC51-6 Special price 6mm S band with G triangle (\$45)
 *PC51-4 Special price 4mm S band with G triangle (\$40)

*All polished finish
 Note: For PC51's in G and other color/finish combinations, please also see Band Collection and Pride Collection 3.

C: EAR CUFFS

upper ear clip or non-pierced lobe "faux"

- CIU-S Unisex (\$6); CIU-G (inquire)
 C2-S (\$5)
 C3-V (\$8)
 C4-S (\$6)
 C5-V (\$8)
 C6BO-S with black onyx. (\$18)
 C6PI-S same as C6BO but with pink CZ. (\$18)
 C7-S (\$5); C7-V (\$6)
 C15-G (\$28)
 C17-G (\$30); C17-G (\$8)

HU: HUGGIE STYLE HOOPS (hinged at bottom)

- Note: See "PC Huggie-2" on Pride Collection3, Side 1 for view of hinge opening.
 HUG1-G (\$18) HUG8-white G (\$55)
 HUG2-G (\$25) HUG8-S (\$15)
 HUG3-G (\$95) HUG9-G (\$45)
 HUG4-G (\$40) HUG10-S (\$30)
 HUG5-G (\$80) HUG11-S (\$30)
 HUG6-G (\$35) HUG12-S (\$25)
 HUG7-G (\$45) HUG13-S (\$15)
 HUG14-S (\$30)

ST: COLOR STONE STUD/POST EARRINGS

(Each, not pair)

- ST1A (Amethyst)-G (\$29); ST1A-S (\$20)
 ST1B (Amethyst)-G (\$39); ST1B-S (\$30)
 ST1C (Amethyst)-G (\$49); ST1C-S (\$40)
 ST2A (Aquamarine or Blue Zircon)-G(\$59); ST2A-S (\$50); (Blue Diamond)-G (\$155)
 ST3A (Aquamarine or Blue Zircon)-G(\$39); ST3A-S (\$30); (Blue Diamond) -G (\$95)
 ST3B (Aquamarine or Blue Zircon)-G(\$49); ST3B-S (\$40); (Blue Diamond) -G (\$245)
 ST4A (Emerald or Green Garnet) -G (\$69)
 ST4B (Emerald or Green Garnet) -G (\$89)
 ST5A (Emerald or Green Garnet) -G (\$69)
 ST5B (Emerald or Green Garnet) -G (\$99)
 ST6A (Blue Sapphire)-G (\$39); ST6A-S (\$29)
 ST6B (Blue Sapphire)-G (\$69); ST6B-S (\$59)
 ST7A (Neon Appatite)-G (\$39); ST7A-S (\$30)
 ST7B (Neon Appatite)-G (\$69); ST7B-S (\$60)
 ST8A (Sapphire) -G (\$49); ST8A (Iolite) -G (\$29) -S(\$20)
 ST8B (Sapphire) -G (\$59); ST8B (Iolite) -G (\$39) -S(\$30)
 ST8C (Sapphire) -G (\$59); ST8C (Iolite) -G (\$49) -S(\$40)
 ST9A (Sapphire) -G (\$39); ST9A (Iolite) -G (\$29) -S(\$20)
 ST9B (Sapphire) -G (\$69); ST9B (Iolite) -G (\$59) -S (\$50)
 ST10A (Ruby) -G (\$69); ST10A (Garnet or Pink Tourmaline, like ST10B)-G (\$59)
 ST10B (Pink Tourmaline) -G (\$49)
 ST11A (Ruby) -G (\$79); ST11A (Garnet or Pink Tourmaline)-G (\$55)
 ST11B (Ruby) -G (\$49); ST11B (Garnet or Pink Tourmaline)-G (\$45)

- ST12A (Ruby) -G (\$89); ST12A (Garnet or Pink Tourmaline)-G (\$55)
 ST12B (Ruby) -G (\$39); ST12B (Garnet or Pink Tourmaline)-G (\$25)
 ST13A (1/4 ct. L)-G (\$69) Inquire for natural diamond.
 ST13B (1/2 ct. L)-G (\$119) Inquire for natural diamond.
 ST13C (1 ct. L)-G (\$219) Inquire for natural diamond.
 ST13D (1/4 ct. L)-G (\$69) Inquire for natural diamond.
 ST13E (White Sapphire)-G (\$69) Inquire for nat. diamond.
 ST14A (1/3 ct. L, prong set)-G (\$99) Inquire for nat. dia.
 ST14B (1/3 ct. L, bezel set)-G (\$99) Inquire for nat. dia.
 ST15A (Tanzanite) -G (\$149); ST15A (Iolite) -G (\$49)
 ST15A (Iolite) -S (\$40)
 ST15B (Tanzanite) -G (\$149); ST15B (Iolite) -G (\$49)
 ST15B (Iolite) -S (\$40)
 ST15C (Tanzanite) -G (\$169); ST15C (Iolite) -G (\$49)
 ST15C (Iolite) -S (\$40)
 ST16A (Tanzanite) -G (\$129); ST16A (Iolite) -G (\$29)
 ST16A (Iolite) -S (\$20)
 ST16B (Tanzanite) -G (\$149); ST16B (Iolite) -G (\$39)
 ST16B (Iolite) -S (\$30)
 ST16C (Tanzanite) -G (\$199); ST16C (Iolite) -G (\$49)
 ST16C (Iolite) -S (\$40)

CH: CHAINS

Note: Most are available in 16", 18", 20", 24", 30" or "custom length". Prices are for 18". Inquire about other lengths. Most G chains available in white or yellow 14k or 18k.

| Coil Links | Anchor Links | |
|---------------------|-----------------|--|
| CH4AG-G (\$90-140) | CH5G-G (\$95) | |
| CH4BG-G (\$190-250) | CH5AG-G (\$155) | |
| CH4CG-G (\$280) | CH5BG-G (\$165) | |
| CH4AS-S (\$15) | CH5CG-G (\$265) | |
| CH4BS-S (\$30) | CH5AWG-G (\$95) | |
| CH4CS-S (\$75) | CH5AS-S (\$15) | |
| | CH5BS-S (\$20) | |
| | CH5CS-S (\$30) | |

Jewelry By Ponce

Mailing Address: 668 N. Coast Highway, # 331
 Laguna Beach, CA 92651
 E-Mail: jewelry@jewelrybyponce.com
 WEB: www.jewelrybyponce.com
 Information: (949) 497-4154
 Orders: (800) 969-RING
 Fax: (949) 494-3837